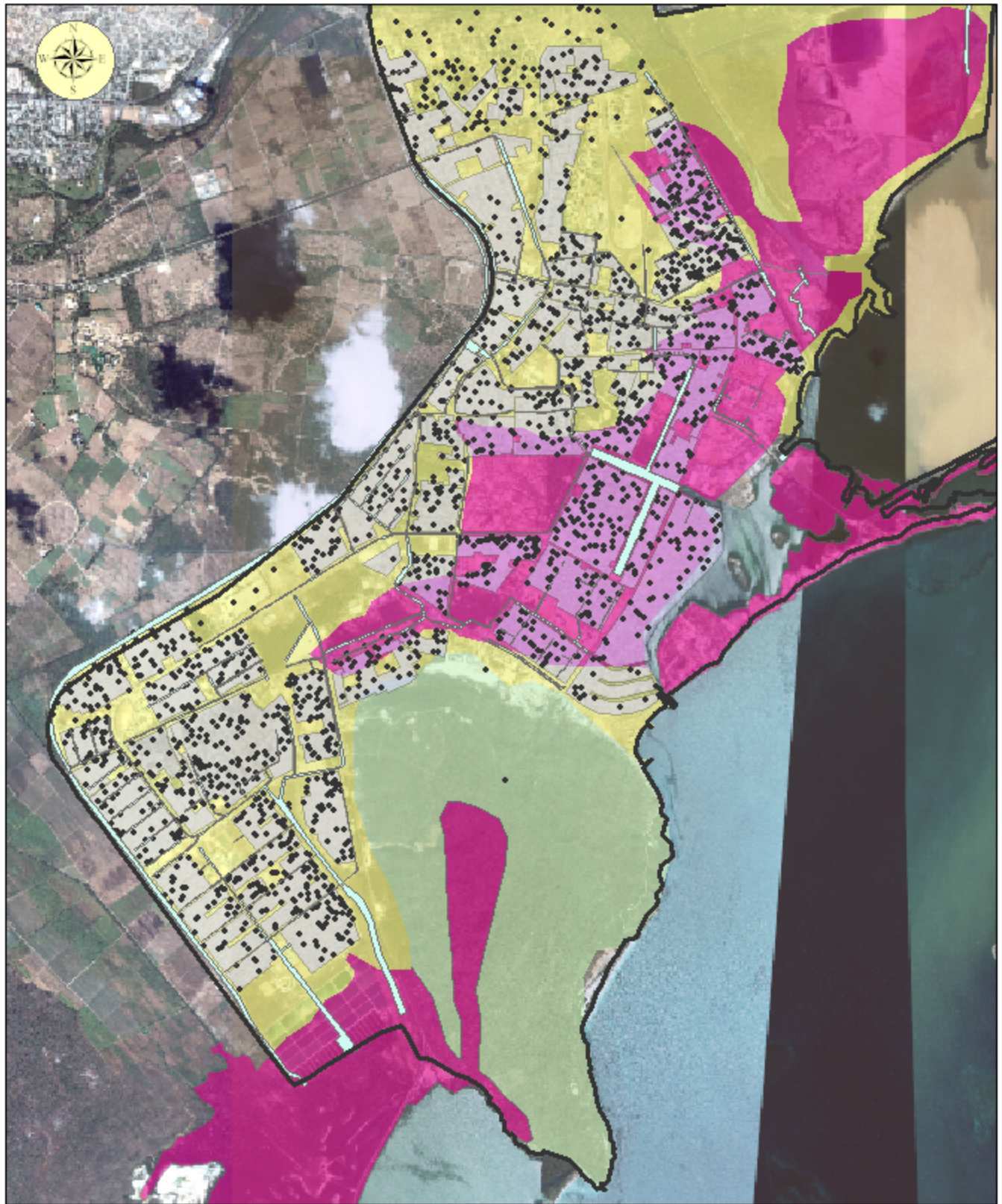


Residential Seismic Hazard Vulnerability (PORTMORE)



0 350 700 1,400
meters

SOURCE: Ikonos, 2001

Legend

- Residential area
- Hazard density
• 1 Dot = 20
- Drains
- Portmore Boundary

Peak Ground Acceleration (%g)
[10% probability of exceedance
in 50 years]

- 30
- 45
- Site specific study area
(geotechnical studies needed)

Source : KSA, CDMP, 1999